

# L780WD/F790WD

Wireless  
**FUZZYSCAN**

A World-Class Wi-Fi barcode scanner for enterprise wireless connectivity

Cino FuzzyScan Wi-Fi barcode scanner creates a leap in efficiency and productivity. It can be easily integrated into an existing enterprise wireless network infrastructure with minimum effort. Through the perfect collaboration of 2" color display, virtual keyboard and integrated keypads, the user not only can confirm the accuracy and the successful transmission of scanned data, but also can manipulate the configurations and data-entry with ease. The Cino Wi-Fi barcode scanner is the most cost-effective solution to fulfill various applications which need reliable and expandable wireless connectivity

**cino**<sup>®</sup>

**E**nterprise-class 802.11b/g wireless connectivity

**S**upports latest wireless LAN security: WEP, WPA and WPA2

**B**uilt-in 2" crystal clear color display, two function keys and a navigation key

**S**martphone-like virtual keyboard is available to fulfill comprehensive alphanumeric data entry

**B**lue link and 2-color status indicators for clear operator feedback

**B**uilt-in vibrator is ideal for noisy and quiet environment

**H**ost acknowledgement function guarantees the data integrity for online real-time transmission

**O**ptional input fields and transmission sequence are available for batch operation

**L**ong range model and high performance with laser aimer model are available

**U**ltimate WaveCentre software for robust application development

### Exceptional ROI

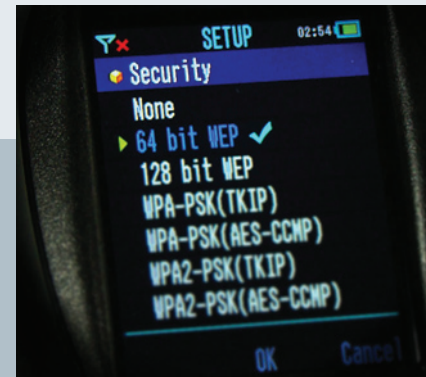
The Wi-Fi scanner can be easily integrated into an existing enterprise wireless network infrastructure with minimum effort. It not only reduces capital expenditures but also improves the return on investment.



Enterprise Wireless Solution

### Reliable and secure data transmission

In addition to conventional WEP security, the advanced WPA and WPA2 security are supported. This prevents unauthorized access to ensure reliable and secure wireless transmission.



Advanced Security

### Exceptional confidence and visibility

The 2" color QVGA LCD provides a clear display for scanned data under different ambient lighting conditions. The user can verify the scanned data on the point of activity, putting an end to blind data collection. It also allows the ease of use on menu-driven configurations and data-entry.



Color Display

### Easy and quick manipulation

The Wi-Fi scanner is equipped with two function keys and a 5-way navigation key. It's very convenient for user to manipulate the operation. This will streamline the workflow and increase employee productivity.

### More accurate and efficient data capture

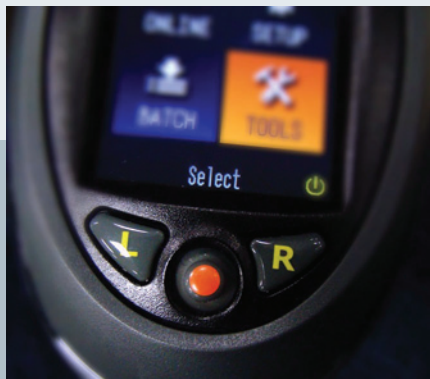
The smartphone-like virtual keyboard allows user to make alphanumeric data entry at the point of activity. This enables user make immediate input or correction on unreadable bar codes or incorrect scanned data.

### Reliable real-time data transmission

In on line scanning, the scanned barcode is decoded and transmitted from the point of capture to the remote host through Wi-Fi connectivity immediately. If you would like to have more reliable data transmission, the "Host Acknowledgement" feature guarantees the scanned data is received by the host successfully.

### Simple and cost-effective batch data collection

The Wi-Fi scanner can store the scanned data into the memory storage. Right after completing the whole batch scanning process, you can transmit all data to the host active application. Furthermore, when the Wi-Fi scanner works with Cino WaveCentre software, you even can save all transmitted data to the host as csv or txt file directly. Optional input fields and transmission sequence are available to meet various host applications.



Keypads



Virtual Keyboard



On Line Scanning



Batch Scanning

### Choice of long range model or high performance model

The long range model is capable of reading 13 mil UPC/EAN barcode up to 24" as well as 3" high density barcode. The high performance model combines the advantage of sharp laser aiming line and linear imager.

### Long-lasting power supports a full shift

For mobility solutions, it's essential to support up to a full shift to avoid wasting time and efficiency by changing the battery. The smart power management performs outstanding power saving to maximize the long-lasting Li-ion battery power, providing up to eight hours of continuous operation.

### Ultimate WaveCentre

When using Wi-Fi scanner together with Cino WaveCentre software, the useful remote control function enables you to send remote messages, lock or unlock one or multiple Wi-Fi scanners from remote host wirelessly. Furthermore, you can transmit scanned data through either virtual COM or HID.



Two Models Available

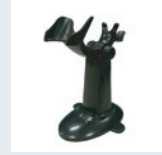


Power Management



Remote Control Feature

Smart Stand



Holder



Power Supply Unit



USB Cable



Charging Cradle



Battery



OPTIONAL ACCESSORIES

# SPECIFICATIONS

## Performance Characteristics

Optical System	High performance Linear Imaging Engine
Print Contrast	L780WD : 25% minimum reflective difference F790WD : 20% minimum reflective difference
Minimum Resolution	Typical 3 mil (Code 39, PCS 0.9)
Working Distance <sup>1</sup>	L780WD : More than 16 inches on 100% UPC/EAN symbols More than 24" on general barcodes F790WD : More than 24 inches on 100% UPC/EAN symbols More than 32" on general barcodes
Light Source	L780WD : 630nm visible red LED with laser aiming F790WD : 630nm visible red LED
Scan Rate	Dynamic scanning rate up to 500 scans per second
Reading Direction	Bi-directional (forward and backward)
Pitch/Skew/Tilt	± 65° /65° /55°
Operating Mode	Trigger
Configuration Setup	On scanner Windows utility - FuzzyScan PowerTool
Data Editing	Condensed DataWizard via bar code command Full-feature DataWizard via FuzzyScan Wi-Fi PowerTool
User Interfaces	2-inch QVGA color display with backlit 2 function keys, one 5-way navigation key Blue link indicator and 2-color status indicators Programmable beeper Vibrator

## Electrical Characteristics

Battery	3.7V, 2200mAh Li-ion rechargeable battery
Battery Charge Time	Approx. 4-5 hours per full charge

## Communication Characteristics

RF Standard	IEEE 802.11b/g
RF Frequency	Country dependant; Typical 2.4 to 2.5 GHz
Operating Modes	Infrastructure mode, Ad-hoc mode
Communication Range	More than 150 meters in open space
Security	WEP, WPA, WPA2

## Supported Symbolologies

1D Linear (L780WD, F790WD)	Code 39, Code 39 Full ASCII, Code 32, Code 39 Trioptic Code 128, UCC/EAN-128, Codabar, Code 11, Code 93 Standard & Industrial 2 of 5, Interleaved & Matrix 2 of 5 German Postal Code, China Postal Code, IATA UPC/EAN/JAN, UPC/EAN/JAN with Addendum Telepen, MSI/Plessey & UK/Plessey GS1 DataBar (formly RSS) Linear & Linear Stacked
Linear-stacked (L788WD, F798WD)	PDF417, Micro PDF417, Codablock, Composite

## User Environment

Drop Specifications	Withstand multiple 1.8m/6ft. drops to concrete
Environmental Sealing	IP41
Operating Temperature	-10°C to 50°C (14°F to 122°F)
Storage Temperature	-40°C to 70°C (-40°F to 158°F)
Humidity	5% to 95% related humidity, non-condensing
Ambient Light Immunity	0 ~ 100,000 lux

## Physical Characteristics

Dimension	95.0 mm (L) x 70.5 mm (W) x 160.5 mm (D) 3.74 in. (L) x 2.78 in. (W) x 6.32 in. (D)
Weight	211g (battery included)
Color	Black

## Safety & Regulatory

EMI/RFI	FCC Part 15 Class B, Taiwan EMC (BSMI) European Union EMC Directive (CE), Korea EMC (KC)
Radio	FCC Part 15 Subpart C, Japan MIC T401 CE EN300 328, Taiwan NCC LP0002 (NCC), Korea KC
Safety <sup>2</sup>	LED Eye Safety IEC62471-1, Exempt Group Laser Eye Safety IEC60825-1, Class 1
Environmental	Compliant with RoHS directive

- Part No.: YMAUG8000000R0
- Specifications are subject to change without notice.
- Cino is a registered trademark of PC Worth Int'l Co., Ltd. All other trademarks and service marks are proprietary to their respective companies.
- The products shown in this catalog may be changed without prior notice. Any reproduction, duplication or other use of the contents of this catalog, in part or in full, without the prior permission of PC Worth Int'l Co., Ltd. is strictly forbidden.
- PC Worth Int'l Co., Ltd. does not accept responsibility for problems concerning infringements of third parties' rights or damages resulting from the use of the contents of this catalog.
- Copyright 2011-2013 PC Worth Int'l Co., Ltd. - Cino Group, all rights reserved.

1. The working distances are measured in 400lux office environment using Grade A bar codes.
2. Don't stare into the LED or Laser beam.

## PC WORTH INT'L CO., LTD.

18F, NO.100, HSIN-TAI-WU RD., SEC.1, HSI-CHIH,  
TAIPEI, TAIWAN, 22102, R.O.C.  
TEL: 886-2-2696-2559 FAX: 886-2-2696-2560

**cino**<sup>®</sup>