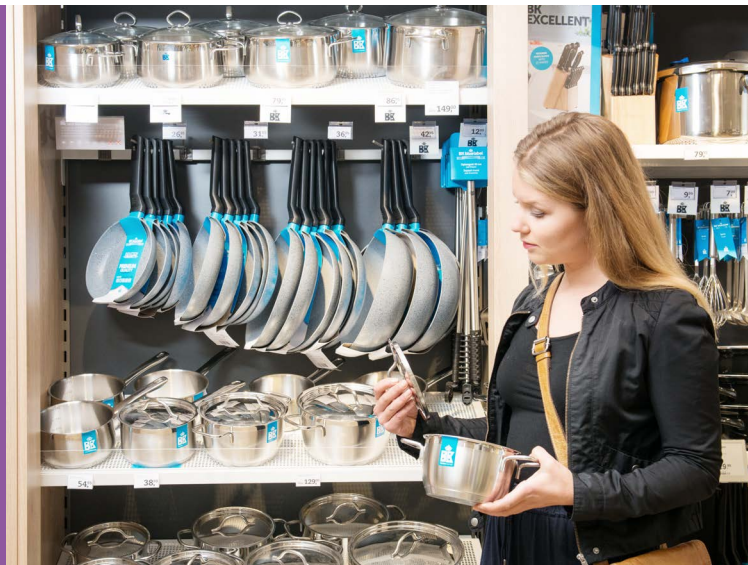


# L-210

## 2D CMOS Imager

The L-210 is a high performance handheld barcode scanner with outstanding durability and reliability. The integrated Opticon 2D CMOS imaging technology providing true point-and-shoot barcode scanning.



## Highlights

- High speed 2D CMOS imager
- Rapidly scans and decodes a wide variety of 1D or 2D barcodes
- The L-210 comes standard with antimicrobial properties
- Custom configuration capabilities including multi-read
- Enhanced motion tolerance
- Improved scanning of curved, wide and poorly printed barcodes
- LED indicators on the top of the scanner
- Durable – survives 1.5 meter drop to concrete
- Trigger modes: manual, auto-trigger and stand detection
- Communication interface: USB Composite device (both serial and HID. Serial is always available for configuration)
- Available in black
- Available accessories: stand
- Backed by a two year warranty

# L-210

## Product Specifications

### Operation

CPU: ARM-Cortex-A7

### Operating indicators

Visual: 3 LED (red/green)

Non-visual: buzzer

### Operating keys

Entry options: 1 scan key

### Communication

USB: composite device (serial and HID)

### Power

Voltage requirement: 5V ± 10%

Current consumption: Typ. 300mA

### 2D Imager optics

Light source: Aiming green LED, cool white illumination LED

Scan method: CMOS area sensor, 640 x 480 pixels

Scan rate: Up to 100 fps

Trigger mode: Manual, auto-trigger

Reading pitch angle: 360°

Reading skew angle: 15°

Reading tilt angle: 360°

Curvature: R≥20 mm (UPC)

Min. resolution at PCS 0.9: 0.2 mm

Field of view: Horizontal 33.2°, Vertical 25.4°

Min. PCS value: 0.2

Depth of field at code 39:

55 - 128 mm (0.127 mm) / 2.16 - 5.04 in (5 mil)

54 - 238 mm (0.254 mm) / 2.13 - 9.37 in (10 mil)

71 - 435 mm (0.508 mm) / 2.79 - 17.13 in (20 mil)

Depth of field at code 128:

64 - 193 mm (0.2 mm) / 2.52 - 7.6 in (7.9 mil)

Depth of field at EAN/UPC:

52 - 293 mm (0.33 mm) / 2.05 - 11.54 in (13 mil)

Depth of field at PDF417:

51 - 148 mm (0.169 mm) / 2.01 - 5.83 in (6.7 mil)

44 - 213 mm (0.254 mm) / 1.73 - 8.39 in (10 mil)

Depth of field at QR code:

62 - 113 mm (0.169 mm) / 2.44 - 4.45 in (6.7 mil)

24 - 252 mm (0.381 mm) / 0.94 - 9.92 in (15 mil)

Depth of field at Data Matrix:

64 - 118 mm (0.169 mm) / 2.52 - 4.65 in (6.7 mil)

45 - 175 mm (0.254 mm) / 1.77 - 6.89 in (10 mil)

### Supported symbologies

Barcode (1D): JAN/UPC/EAN incl. add on, Codabar/NW-7, Code 11, Code 39, Code 93, Code 128, GS1-128 (EAN-128), GS1 Databar (RSS), IATA, Industrial 2of5, Interleaved 2of5, ISBN-ISSN-ISMN, Matrix 2of5, MSI/Plessey, S-Code, Telepen, Tri-Optic, UK/Plessey  
Postal code: Chinese Post, Intelligent Mail Barcode, Korean Postal Authority code, POSTNET

2D code: Aztec Code, Aztec Runes, Chinese Sensible code, Codablock F, Composite codes, Data matrix (ECC200), Passport MRZ (OCR-B), maxi Code (mode 2-5), MicroPDF417, MicroQR Code, PDF417, QR Code

### Durability

Temperature in operation: -20 to 50 °C / -4 to 122 °F

Temperature in storage: -40 to 70 °C / -40 to 158 °F

Humidity in operation: 5 - 90% (non-condensing)

Humidity in storage: 5 - 90% (non-condensing)

Ambient light immunity: Fluorescent 10,000 lx max, Sunlight 100,000 lx max, Incandescent 10,000 lx max

Max drop test: 1.5 m / 5 ft drop onto concrete surface

Vibration test: 10 - 100Hz with 2G for 1 hour

### Physical

Dimensions Scanner (W x H x D): 105.4 x 153.4 x 60 mm / 4.15 x 6.04 x 2.36 in

Weight body: Ca. 112 g / 3.9 oz (excl. cable)

Case: Black

Cable Length: 1.5 Meter

### Regulatory & safety

Product compliance: CE, FCC, RoHS, IEC62471-1:2006, EN55032, EN55035

### Items

Sold separately: Stand